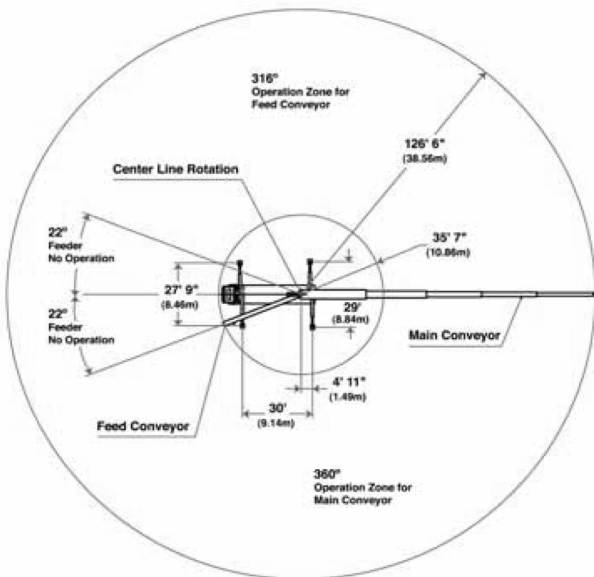
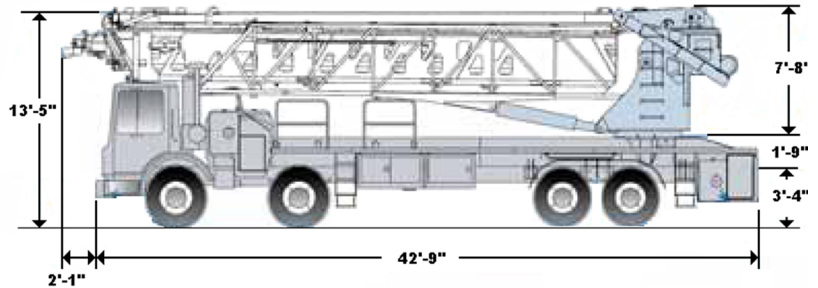




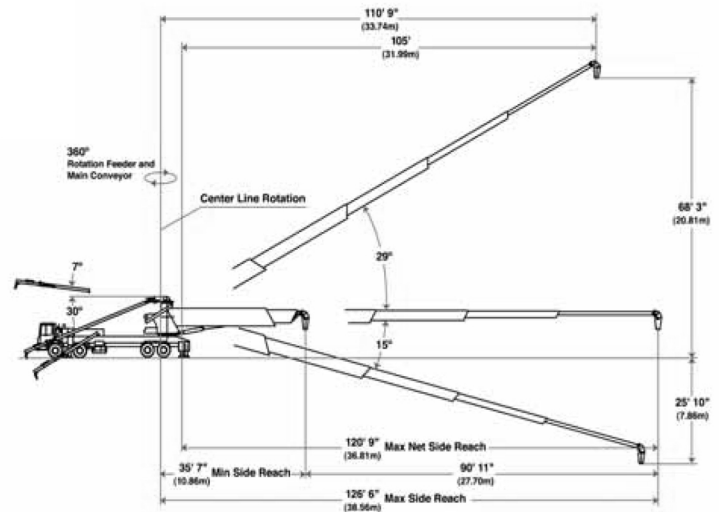
130 FT TRUCK MOUNTED TELESCOPIC CONVEYOR

Our 130 ft Telebelts are the perfect marriage of versatility and reach. They can carry concrete, stone, soil, mulch, etc. across distances of up to 120 ft.

The low clearance of the Telebelt allows us to access pours that lack the necessary unfolding height required to accommodate even the smallest of our boom pumps.



Photos and drawings are for illustrative purposes only.



Conveyors

Conveyor horizontal reach —

Maximum at 0°	126' 6"	(38.56m)
Maximum at 29°	110' 9"	(33.74m)

Conveyor belt width 18" (457mm)

Feed conveyor length 38' (11.60m)

Feed conveyor belt width 18" (457mm)

Trunk/end hose length 15' (4.57m)

Discharge height from grade —

Maximum at 29°	68' 3"	(20.81m)
Maximum at -15°	-25' 10"	(-7.86m)

Rated capacity at 0°
main & feed conveyors 6 yd³/min (4.60m³/min)
360 yd³/hr (275m³/hr)

Rated capacity up to 20°
main & feed conveyors 3.80 yd³/min (2.90m³/min)
230 yd³/hr (175m³/hr)

Outriggers

Net reach beyond outriggers —

at 0°	120' 9"	(36.81m)
at 29°	105'	(31.99m)

Outrigger spread L - R — front hydraulic extend out/down 27' 9" (8.46m)

Outrigger spread L - R — rear hydraulic extend out/down 29' (8.84m)