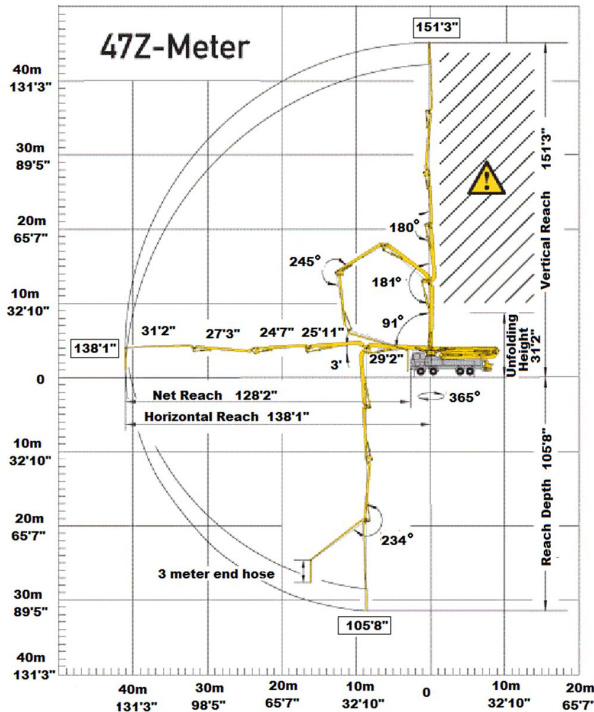
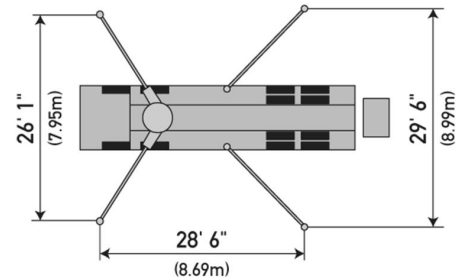
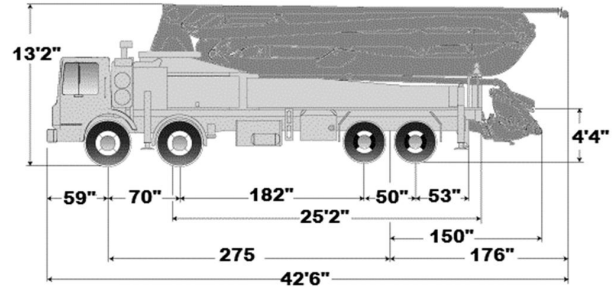




47 METER Z CONCRETE BOOM PUMP

Our 47m articulated Z-boom pump, the largest in our fleet, can overcome vertical and horizontal obstacles where overhead wires and obstructions are not present and our smaller booms fall short.

Because this pump is a Z-Boom it requires less room to unfold than other 42m booms. If you need the reach but space is tight, this pump is the one you want.



BOOM SPECIFICATIONS | Z-FOLD DESIGN

Height & Reach

Vertical reach	151' 3"	(46.10m)
Horizontal reach	138' 1"	(42.09m)
Reach from front of truck*	128' 2"	(39.07m)
Reach depth	105' 8"	(32.21m)
Unfolding height	31' 2"	(9.50m)

5-Section Boom

1st section articulation	91°	
2nd section articulation	181°	
3rd section articulation	180°	
4th section articulation	245°	
5th section articulation	234°	
1st section length	29' 2"	(8.89m)
2nd section length	25' 11"	(7.90m)
3rd section length	24' 7"	(7.49m)
4th section length	27' 3"	(8.31m)
5th section length	31' 2"	(9.50m)

General Specs

Pipeline Size (ID) metric ends	5"	(125mm)
Rotation	365°	
End hose — length	10' 0"	(3.00m)
End hose — diameter	5"-4"	(125-102mm)
Outrigger spread L - R — front	26' 1"	(7.95m)
Outrigger spread L - R — rear	29' 6"	(8.99m)
hydraulically extend out & down		
hydraulically swing out & extend down		

PUMP SPECIFICATIONS

	47Z.16H	47Z.20H
Output — rod side	210 yd ³ /hr (160m ³ /hr)	—
— piston side	146 yd ³ /hr (112m ³ /hr)	260 yd ³ /hr (200m ³ /hr)
Pressure — rod side	1,233 psi (85 bar)	—
— piston side	1,885 psi (130 bar) •	1,233 psi (85 bar)
Material cylinder diameter	9" (230mm)	11" (280mm)
Stroke length	83" (2,100mm)	83" (2,100mm)
Maximum strokes per minute		
— rod side	31	—
— piston side	21	26
Volume control	0-Full	0-Full
Maximum size aggregate	2.5" (63mm)	2.5" (63mm)